

INSIDE
What you'll find
in this edition...

the perry way

WWW.PERRY-LAKE.ORG

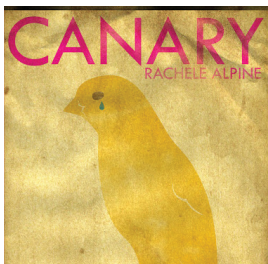
OCTOBER 2012

GET GROWING!



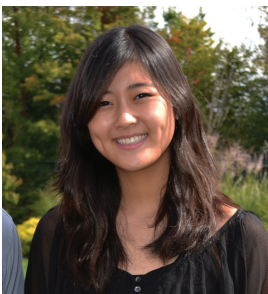
Page 2

GET WRITING!



Page 3

SCHOLARSHIP



Page 6

GOT PAPER?



Page 7

THANK YOU!

by Jack Thompson, Ed.D., Superintendent

Thanks to the entire staff, students, and community for helping to provide an outstanding start to the school year! Fall is when we have become accustomed to seeing school district report cards released by the Ohio Department of Education that inform communities how their schools rank in a number of student achievement and growth categories. Unfortunately, this year the release of district report cards has been delayed until October 17, pending an investigation by the state auditor's office. We are proud to announce that preliminary results from the Secure Data Center indicate that Perry Local School District met 100% of the indicators in 2011-12, including the value added growth measure, and will retain an "Excellent" rating for the 9th straight year. I would also like to extend special congratulations to Perry Middle School for earning the rating of "Excellent with Distinction". As you may know, this is the last year the Ohio Department of Education will be rating schools using the current system and will convert to providing grades of A, B, C, D and F on the district report cards. What an "excellent" way to finish this reporting method. We commend our students, staff and the community for all of the hard work and support that made this accomplishment possible.



The year 2013, will mark the 20 year anniversary of our campus being opened to our students and community. We are grateful for the diligent preservation of our buildings and grounds over the years, which has kept our campus in good running condition. Even with the excellent maintenance and upkeep, we still are faced with a number of significant capital upgrade and replacement needs. Many of the items needing replacement have lasted longer than expected but, nevertheless, are now approaching their "end of life". This means, that as these systems begin to fail and breakdown, they will no longer be serviceable. One such system at the top of our list, is the technology backbone and infrastructure, which includes network servers, cabling, and our voice IP system.

...continued on page 3

INSPIRATION AROUND THE WORLD

by Sierra Soblosky



On the CYWS concert tour are PHS Band members, Christian Fatica, Kyle Shepard, Mr. Ian Youngs, and Peter Huston

This past summer, three Perry students and Mr. Brad Hruska, the high school band director, participated in a trip to Poland and Hungary with The Cleveland Youth Wind Symphony.

Peter Huston, who graduated from Perry High in 2012, Christian Fatica, and Kyle Shepard, both juniors, were part of the tenth annual Cleveland Youth Wind Symphony European concert tour. The tour began June 20, and ended June 30. The group traveled through Germany, Poland, the Czech Republic and Hungary, and got to see interesting sites, such as, the largest salt mine

...continued on page 7

PERRY HIGH SCHOOL GIVING GARDEN



Putting the finishing touches on the new Giving Garden storage shed are PSL students, Katie Lauria and Kaitlyn Marsey.

Seven newly installed planting beds, in the high school courtyard, produced a wide variety of vegetables and herbs, which were grown by students and community volunteers, and donated to the Perry Center. In its first season, the garden produced more than 800 pounds of vegetables, that were

delivered to the center for distribution to needy members of the community.

Students noted, that working in the garden was a rewarding learning experience and a lot of fun!

The Giving Garden is an ongoing community service project of Perry Service Learning (PSL) and the



Two year old Jimmy Trentanelli helps with the tomato harvest from the Giving Garden. Jimmy is the son of Mrs. Allison Trentanelli, a PSL advisor, and one of the many volunteers who helped make the garden a success.

Perry High School Recycling Club. Anyone interested in participating in the program is encouraged to contact Mr. Mark Soeder at soederm@perry-lake.org, or Mrs. Allison Trentanelli at trentanellia@perry-lake.org.

WHAT CAN WE LEARN FROM MEGAN?

Last spring, at the Ohio, Division 3, State Track Meet, with 50 meters left in the race, Arden McMath falls, and Megan Vogel from West Liberty, Salem High School stops to help. Not only did she help her, she made sure that she let her finish first.

As I thought about this story, I thought of sportsmanship, service, helping others, thoughtfulness and making the world a better place, I wondered what makes Megan different from other kids, putting others first before herself?

I can only imagine she felt confident and good about herself and didn't worry about what others would think of her. It's the same message the school

counselors have been promoting in the 40 assets. Developmental Assets – What role do we play?

Search Institute research indicates that ideally, a young person that has 31 assets or more, is 97% less likely to engage in substance abuse and early sexual behavior. If a student has 21 to 30 assets: 80 to 81% less likely, 11-20 assets: 60 to 70 less likely, less than 11: around 50%.

The more the better, but we are trying to educate everyone, to help all kids have at least 31 assets.

All the Assets can be found at:

<http://www.search-institute.org/content/40-developmental-assets-adolescents-ages-12-18>.

by Tom deHaas, PES Guidance Counselor



...continued on page 6

MRS. MIELKE'S BOOK COVER RELEASE

Another exciting chapter has emerged in the ongoing saga preceding Rachele Mielke's book release in August 2013. The cover for Mielke's book, *Canary* published under her maiden name, Alpine, has just been released on the teen book review book blog IcyBooks, and what an awesome cover it is.

For those who don't already know, *Canary* is a novel following female teenage character Kate Franklin and

a very difficult decision she has to make affecting everyone around her, "If she stays quiet, it will destroy her. If she speaks out, it will destroy everyone."

I sat down with Mielke to talk to her about her cover release, and how she felt about it. "The cover is very symbolic, there was an artist at the publishing house that created it, and I just saw the cover for the first time

...continued on page 4



by Connor Lowe

THANK YOU! *...continued from page 1*

Over the past year, we developed a technology plan to ensure our students continue to have the technological capacity to pursue world class standards at Perry. Our technology vision is to continuously adapt, integrate and maintain appropriate technologies to enhance learning and maximize our capacity for success in the 21st century. For this vision to be realized, we must stay current with our technology supports. As a result, we have provided new laptop computers in each of our classrooms and labs at the elementary. Not only does this upgrade provide the needed access for our students, but also gives us the capability to conduct

whole grade testing electronically, which is being mandated by the Ohio Department of Education in 2015. Over the summer, we also installed a new media pro lab at the high school giving our students authentic experiences utilizing industry standard software and technology to produce multimedia audio and video productions. At the same time, we launched a new district website increasing our student input and adding the social media connections such as Facebook and Twitter. This fall, we conducted an internal audit to determine our capability for moving forward to realize and sustain the District's technology vision. Not to

our surprise, the 20 year old network infrastructure encompassing servers, switches, cabling, and voice IP system can no longer support our technology needs. This information has set us to work on developing bid specifications to gather proposals and develop a plan for replacing our antiquated systems.

To close, I would like to wish everyone a wonderful 2012-2013 school year. In the coming months, look for an email asking for your input on how we can continue to improve our services to the community and provide world class standards to our students. Go Pirates!

BUILDING A SENSE OF COMMUNITY

"It's a Great Day to be a Perry Pirate!" What does this mean? Is it a cheesy catch-phrase? Maybe, but it also embodies something else. What we do by reiterating this every day is to remind our students that is truly great to be here, and that they are a part of something special. It is the difference between going to school and going to OUR school. This sense of spirit and pride allows our students to be part of something exciting and unique. It creates a culture where staff and students work together to promote our school and ensure its continued improvement.

School spirit and pride build a sense of community within the school.



It is important, because it sets the tone for all aspects of our school and our students. When students are involved in activities on and off campus, it demonstrates a passion for Perry Pride that is immeasurable and

by Robert Knisely, PMS Principal

contagious. I believe that school spirit translates into higher expectations of one's self and surroundings, pushing for positive changes at all levels of our school.

Research shows that students who convey a strong sense of school pride and spirit, also have a strong sense of respect and responsibility. Both are important characteristics, that we strive to teach all of our students. School pride also, has a direct impact on students' behavior. The more pride students take in the school, the fewer behavioral issues the school has to deal with, which makes it really, a "Great day to be a Perry Pirate!"

PERRY INSTRUCTIONAL GOALS 2012-13

by Betty Jo Malchesky, Ed.D., Director of Curriculum, Instruction, Assessment

Welcome back to all families and a special welcome to families new to Perry. We hope you quickly come to know the Perry Way:

- world-class standards
- teachers and leaders who do whatever it takes, so that ALL students reach their highest potential
- an entire district who prides itself on lifelong learning and continual improvement

Goal 1: 100% students learn the guaranteed and viable curriculum.

Goal 2: Authentic Literacy - College and career ready: 100% students are close readers of complex text, write daily, research, think critically, question, and stake evidence of their learning in collaborative, problem-solving groups.

Goal 3: Response to Intervention/Enrichment – 100% of the Professional Learning Community is highly collaborative and engaged in formative instructional practices (FIP) so that all staff has common language and a clear process for maximizing student growth.

Clear Academic Objectives

Understanding the clear academic objectives that students are learning and reported on report cards is essential for all stakeholders – students, parents, and the entire school community. With that said, parents and students will want to become very familiar with the Academics tab of the district website. From there, click Curriculum Overview and find the curriculum for all three schools on the right side of the page. For new curriculum

implemented this year (English language arts, math, and social studies), you will find the clear learning targets for each unit within a grading period to include vocabulary, enduring understandings, and essential questions. Student performances on these objectives collected across the grading period are used for reporting progress on report cards.

On behalf of the teaching staff at Perry, we ask that you stay connected to the clear academic objectives each grading period and partner with us to expand conversations and learning at home.

NWEA – MAP® Testing

This fall, Perry students in grades K-8 are experiencing online, computerized assessment much like the incoming, new state assessment system administered to all Ohio students in 2014-15. MAP® (Measures of Academic Progress) is a universal benchmark screener used to gather data on all students three times a year (fall, winter, spring) to chart growth over time. MAP® is a norm-referenced, online adaptive assessment that reports what a student is ready to learn now. MAP® testing is approximately 20-30 minutes for primary grades (K-1) and 45 minutes in grades 2-8 in the following subjects:

- Grades K - 2: reading, math
- Grades 3-8: science, reading, math
- High School will use MAP with IEP students this fall since MAP tests grades 2-10; High School will research the use of MAP End-of-course assessments in

Algebra I, Geometry, Algebra II

When students take computerized adaptive tests, the difficulty of the test is adjusted to the student's performance so each student sees different test questions. The difficulty of each question is based on how well the student has answered the questions up to that point. As the student answers correctly, the questions become more difficult. Therefore, there is no "ceiling" to a student's achievement level. MAP® will replace Terra Nova achievement testing and will be used to support students with intervention and enrichment needs.

Third Grade Reading Guarantee

In July 2012, Governor Kasich signed into law Senate Bill 316 with provisions for the Third Grade Guarantee.

Ohio public schools are required to assess the reading achievement of every student enrolled in grades K-3 by September 30, of each school year and identify students who are not reading at grade level based on previous end of year standards. If a student is identified "not on-track," Ohio schools must notify the parent/guardian and a reading intervention plan is implemented and progress monitored throughout the year for the specific reading deficiency identified. Effective spring 2013, if a third grade student does not score at the "proficient" cut score on the Ohio Achievement Assessment (OAA), the principal and reading teacher recommend student for promotion or retention and continued intervention.

MRS. MIELKE'S BOOK COVER RELEASE

...continued from page 3

a week ago." A lot goes into the making of a cover for a book. A few months ago, Mielke was sent a questionnaire about her book in order to make the best cover possible. One of the questions was what movie stars she thought would look most like her main character, Kate Franklin; she didn't really know of any teenage actresses, so she had to find help. "Mrs. Moskowitz and I were finally able to come up with a list of potential candidates that could match Kate, a few of the actresses were Ellen Page, Willa Holland, Molly Ephraim, and Ashley Rickards."

Mielke's idea for her book, first came in college, when a professor had her do a project using a mix of poetry, while telling the reader about an issue; she decided to focus on harassment and athletes getting perks, while people turned a blind eye. Thus spurred the idea for Canary. One of the hardest parts about this whole process was not giving away too much information, or the ending, to all her guessing and curious fans. "It's definitely been rough," Mielke said with a smile. Some advice she would give to all aspiring writers, that want to be published

one day is, "Get writing, continue writing, and never give up!"

Before we parted, one of the things Mielke said she wanted to say to all her fans is, that they can talk to her, and she loves to hear feedback about her work. Listed below are a few ways you can get in touch with Mrs. Mielke.

<http://www.freckle-head.blogspot.com/>.

www.twitter.com/ralphine.

www.facebook.com/rachealealpine.

Check out the whole cover review on IceyBooks: <http://www.iceybooks.com>.

CONGRATULATIONS, HALL OF FAME INDUCTEES!



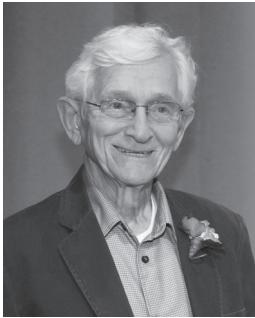
*Nicole Altenweg
Athletic Hall of Fame*



*Robert Dawson
Distinguished Alumni
Hall of Fame*



*Pat Giannell
Athletic Hall of Fame*



*Gene Kobus
Athletic Hall of Fame*



*Corey Sarosy
Athletic Hall of Fame*



*Brian Varsey
Athletic Hall of Fame*

Twenty-one years ago, the Perry Pirate Booster Club authorized the formation of a Hall of Fame Committee to honor Perry Athletes, by developing a process to create an Alumni Athletic Hall of Fame.

In the spring of 2001, the Perry Board of Education established The Distinguished Alumni Hall of Fame, to honor former students of Perry High School, whose lives are exemplary for both their career accomplishments and their contributions to the well being of others.

These individuals will serve as an inspiration to the students of Perry Local Schools, encouraging them to live their dreams, and to pursue personal excellence in all future endeavors.

Congratulations, everyone!

WHAT'S NEXT?

— by Todd Porcello, PHS Principal

The 2012-2013 school year is in full swing, and I am thankful for the supportive school community that exists in Perry. During my time here, I have experienced the outstanding pride that exists throughout the community. As the new high school principal, I look forward to continuing a tradition of excellence.

We have so much to celebrate at Perry High School! For example, we are proud to be ranked in the top 3% of schools nationwide, according to the US News and World Report. Such accolades are reflective of the dedicated students, staff and parents here at Perry High School.

We cannot rest on our past accomplishments and need to keep the momentum moving forward. One way we do this, is to continue asking the all-important question...

What's Next?

With students as our main focus, we continue to discuss how to best prepare students for the future. Here

are some important statistics to consider:

-The US Department of Labor estimates that today's learner will have 10-14 jobs...by age 38.

-The Top 10 in-demand jobs in 2004...did not exist in 2010.

The Reality

We are currently preparing students for jobs that do not yet exist, where they will use technologies that haven't been invented. In order to solve problems we don't even know are problems yet. This is a daunting task that all schools across America are facing. Perry High School, however, is up to the challenge, and by asking the right questions, we have developed a plan, that will best prepare our students for an uncertain future. So what's next?

What is the plan for responding to this uncertain future with technology that continues to evolve at an ever-increasing rate?

The first step is to focus on the essential skills needed to be successful; regardless of what career path a student chooses. Content is always important in every high school class, but the bigger focus will need to be on providing and developing students with the tools and skills today, that will prepare them to possibly have 10-14 jobs by the age of 38.

What are the essential skills that students should be developing in every class?

- 1) Critical Thinking
- 2) Problem Solving
- 3) Adaptability and Agility
- 4) Initiative and Entrepreneurialism
- 5) Effective and Oral Conversation
- 6) Accessing and Analyzing Data/Information
- 7) Curiosity and Imagination

We will continue to stress the importance of developing these

...continued on page 6

WHAT CAN WE LEARN FROM MEGAN? *...continued from page 2*

Last Spring, students in Perry Schools in grades 7-11 completed Search Institute surveys. Although we are still analyzing the data and results, some of the things our students said, were that, they wish family communication was better, they want positive role models in their lives, and they want a community that values them as “part” of the community. Plans to share more information are coming. At the present time, let’s work together to help our kids to be positive role

models for younger students, be more helpful and service-related, and always show good sportsmanship.

It seems fitting to think of the Perry Alma Mater:

Our school is an emblem
of spirit and fair play;
Long will she stand thus,
as a shrine of our today.
Proud are we of our charity
and standards high in aim;
Win or lose we will
ne’er refuse to try to

play the game.

Perry for you we’ll work and fight,
we’ll honor your name.

Perry for you we claim the right to
spread far your fame.

Courage and loyalty,
qualities dear to all;
For Perry, our alma mater,
to us you will reign o’er all.

Written by:
Gilbert Porsch
(a music teacher in Perry)

WHAT’S NEXT? *...continued from page 5*

skills and provide students with opportunities for growth.

Extra-curricular activities also afford students with a tremendous opportunity to develop in these capacities.

The second step is to create an environment that puts technology in

the hands of the students. We are currently exploring upgrading our wireless infrastructure, which will allow us to reach the goal of moving to a Bring Your Own Device (BYOD) setting where students can bring an Ipad, Laptop, etc. to school for educational purposes. Throughout

this school year we will be laying the foundation to make this possible.

Perry is a great place and has a tradition of excellence. We will keep moving forward by asking, “What’s Next” and by responding to the needs of our students, in order to provide world class opportunities.

NATIONAL MERIT SCHOLARSHIP SEMI-FINALIST

Perry Local School District is proud to announce the naming of Perry High School senior, Christine Jung, as a Semifinalist in the 58th annual National Merit Scholarship Competition (NMSC).

“Christine is an intelligent and personable young lady, who actively participates in many activities throughout the community,” said Perry High School principal, Todd Porcello. “We are proud of her and congratulate her on this honor.”

The annual competition began with roughly 1.5 million juniors from about 22,000 high schools, who entered the 2013 National Merit Scholarship Program by taking the 2011 Preliminary SAT/National Merit Scholarship Qualifying Test, which served as an initial screen of program entrants.

In early September, about 16,000 students, or approximately one-third

of the 50,000 high-scorers, were notified that they had qualified as Semifinalists. The selection of some 8,300 Merit Scholarship Finalists from that group is now in progress.

“Christine is involved in a number of high school activities, including

Leadership Lake County, Science Olympiad, and is currently, Vice President of Student Council,” Porcello added. “She also enjoys reading, running, and hopes to continue her studies in college, where she will major in Business.”

Beginning in March, and continuing to mid-June, NMSC will notify approximately 8,300 Finalists at their home addresses, that they have been selected to receive a Merit Scholarship award. NMSC awards are of three types: National Merit - \$2500 Scholarships, Corporate-sponsored Merit Scholarship awards and College-sponsored Merit Scholarship awards. This year, NMSC awards are worth more than \$32 million.

More information is available at www.nationalmerit.org.



*Perry High School Principal,
Mr. Todd Porcello with 2012 National
Merit Scholarship Semi-finalist
Christine Jung*

INSPIRATION AROUND THE WORLD ...continued from page 1

in the world, the concentration camp at Auschwitz Birkenau, and Wawel Castle. Mr. Hruska said, "On the trip, we toured one of the largest salt mines in the world, performed at a brand new concert hall, and ate amazing local food. The concert performances during the trip were absolutely incredible. The most meaningful part of the trip for me, was the tour of the concentration camp at Auschwitz."

The Cleveland Youth Wind Symphony performed at the new concert hall, called the Filharmonia Gorzowska in Gorzow, the historic St. Catherine's Church in Krakow, and the Holy Cross Church of Zakopane. Mr. Hruska said, "The concerts

were extremely well performed and featured wind band music of the highest quality. I'm very proud to have our school represented in the Cleveland Youth Wind Symphony." Hruska says, his favorite part of the trip was "seeing our Perry students performing at such a high level" and also "conducting the group in two of the most beautiful cathedrals in Europe." Kyle Shepard's favorite part was "seeing all the gigantic cathedrals and churches and all the history of Poland." Kyle also said, "The performances were unreal, knowing people respect the arts in other parts of the world, is truly meaningful." He encourages people to "Live in the moment!" Christian Fatica said, "It was

truly a trip of a lifetime. I'm glad I got to go on such an amazing trip and be able to do the thing I love the most, while on it."

Mr. Hruska, who is one of the symphony managers for the Cleveland Youth Wind Symphony, says, "It is a challenging job but very rewarding. I get to work with other band directors from the Cleveland area, that also assist in running the group."

The Cleveland Youth Wind Symphony takes tours every two years. So the next time it happens, nine Perry students that made it into CYWS this year, will have the opportunity to attend this amazing tour.

GREEN YOUR HALLOWEEN!



Perry students Blaine Luszcak (left), Ricky Barcenas and CJ Spronz will be joining dozens of other volunteers in the annual Halloween paper recycling event, "Green Your Halloween."

Perry High School students from the Recycling Club and the Perry Service Learning program are sponsoring the 3rd annual "Green Your Halloween" event. On Halloween night, students from the high school will be canvassing the Dugan's Farms development and collecting paper to be recycled in lieu of candy. Residents are asked to consider stockpiling their recyclable paper to give to the students on Halloween night. Households who live outside of Dugan's Farms are encouraged to drop their paper off at the Abitibi bins located outside Perry Elementary school, or call

Mr. Soeder (soederm@perry-lake.org) or Mr. Glavan (glavanr@perry-lake.org) at Perry High School (259-3511 or 259-9324) to arrange for pick up.

The high school students will also be holding a competition between 2nd block classes, during the week of October 29, to see which classroom can bring in the most recycled paper. Please consider sending old newspapers, junk mail, magazines, etc., to school with high school students. All paper collected will be added to our Abitibi bins, and funds received from Abitibi directly benefit students of the Perry Local Schools.

PERRY AREA JOINT RECREATION DISTRICT 2012

The Perry Area Joint Recreation District cordially invites you to attend our First Annual Volunteer

Recognition Award Dinner. Please join us as we honor this year's recipients; Michael King, Phyllis Matson, and Robert Rideout for their exceptional dedication to volunteerism, on Thursday,

November 15, 2012, at 6:00 PM, at the Perry Community Senior Center.

Tickets are \$10.00.

For more information, call the Recreation Director at:

259-9469

or the Senior Center Director:

259-3772

Perry Community
Senior Center
2800 Perry Park Rd.
Perry, OH 44081



xpress
printing services, inc.
x-pressprinting.com
440.951.8848

Give us a call for all your fundraising events!

- Raffle Tickets
- Promotional Products
- Side Boards
- SPECIAL DISCOUNTS for Perry Community & Scholastic Events



Need more space? Think of an addition!



COME SEE OUR NEW SITE:
PARAMOUNTCC.COM

REACH US BY PHONE:
(440) 259-1963

It happens. Family needs change and you find yourself in need of more living space. That's where we can help. Family rooms, screen rooms, gazebos and in-law-suites are just a few ways we can help you maximize the investment in your home. For quality work, Northeast Ohio turns to Paramount.

Let's jump-start your project: additions@paramountcc.com

ADDITIONS / DECKS AND SUNROOMS / NEW HOMES & COMMERCIAL CONSTRUCTION AND CONTRACTING

PERRY
LOCAL SCHOOLS



4325 Manchester Ave. Perry, OH 44081



CURRENT RESIDENT
PERRY, OH 44081

Non-Profit Org.
US Postage
PAID
Perry, OH
Permit #7

TIME SENSITIVE MATERIAL: POSTMASTER PLEASE DELIVER BY OCTOBER 31